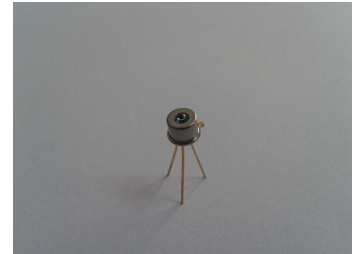


1.5GHZ Analog InGaAs PIN photodiode

Model: LSIPD-A75

Features:

- High reliability, low dark current
- Top illumination planar PIN PD
- -3dBm Bandwidth 1.5GHZ
- To-46 with ball lens cap



Applications:

- Industrial automatic control
- Science analysis and experiment
- Analog CATV
- Fiber communication
- Fast optical pulse testing
- OTDR
- Optical fiber sensor



The absolute values

reverse voltage	30V	Operating temperature	-45~+85°C	Power dissipation	10mW
Forward current	10mA	storage temperature	-45~+85°C	Soldering temperature(time)	260°C (10s)

The opto-eletronic characteritics (@Tc=22±3°C)

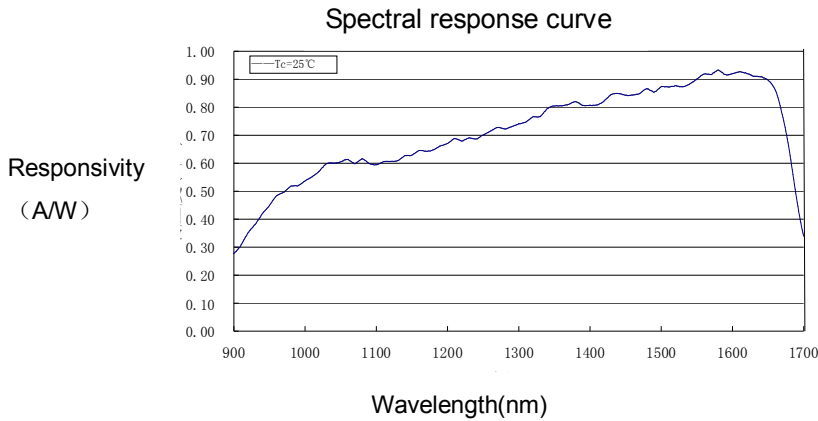
Parameters	Sym.	Test conditions	Min	Typ	Max	Unit
Response Spectrum	λ	—	800		1700	nm
Active diameter	φ	—	75			μm
Reponsivity	Re	$\lambda=1.31\mu\text{m}, \varphi_e=1\text{mw}$	0.8	0.85		A/W
		$\lambda=1.55\mu\text{m}, \varphi_e=1\text{mw}$	0.85	0.9		A/W
-3dB bandwidth	BW	$V_R=5V, R_L=50\Omega$	1,5			GHz
Dark current	I_D	$V_R=5V$		0.1	1	nA
Total capacitance	C_{tot}	$V_R=5V$		0.5	0.75	pF
2nd Order Inter-modulation	CSO	Two tones, 1mW			-70	dBc
3rd Order Inter-modulation	CTB	Two tones, 1mW			-80	dBc
Return Loss	RL	1mW	-45			dB
package	TO-46					

地址：北京市海淀区苏州街12号西屋国际A座1104 邮编：100080

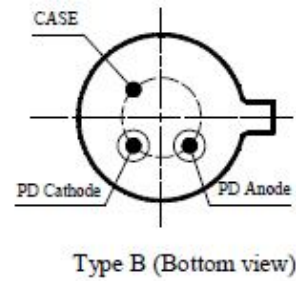
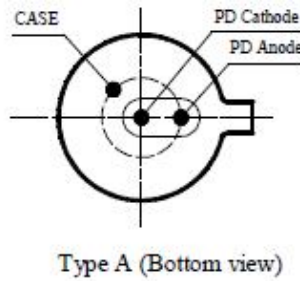
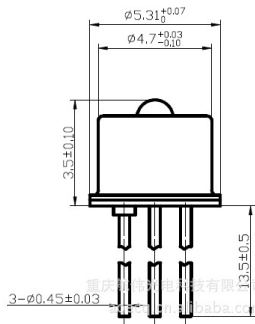
Address: Building A Rm 1104, Westing house, No 12 Suzhou Street, Haidian District, Beijing 100080, China.

TEL: +86-010-53691988 FAX: +86-010-62557230 Email: info@lightsensing.com Website: www.lightsensing.com

The typical Responsivity curve



The package and Lead



Ordering information:

LSIPD-A75-X-X

<p>X=A Type A X=B Type B</p>	<p>X=0 TO-46 Can with ball lens cap X=SMFP SM Fiber coupling with FC-PC connector X=SMFA SM Fiber coupling with FC-APC connector X=SMSA SM Fiber coupling with SC-APC connector X=5MMFA 50um MM Fiber coupling with FC-APC connector X=6MMFA 62.5um MM Fiber coupling with FC-APC connector X=JKFC TO-46 Can with FC receptacle X=Other By customer's request</p>
----------------------------------	---

The Cautions

- 1: The suitable ESD protecting measures are recommend in storage, transporting and using.
- 2: The fiber bending radius no less than 20mm for avoiding fiber damaged ,Be sure the fiber coupling facet is clean before connecting it to opto-circuit.